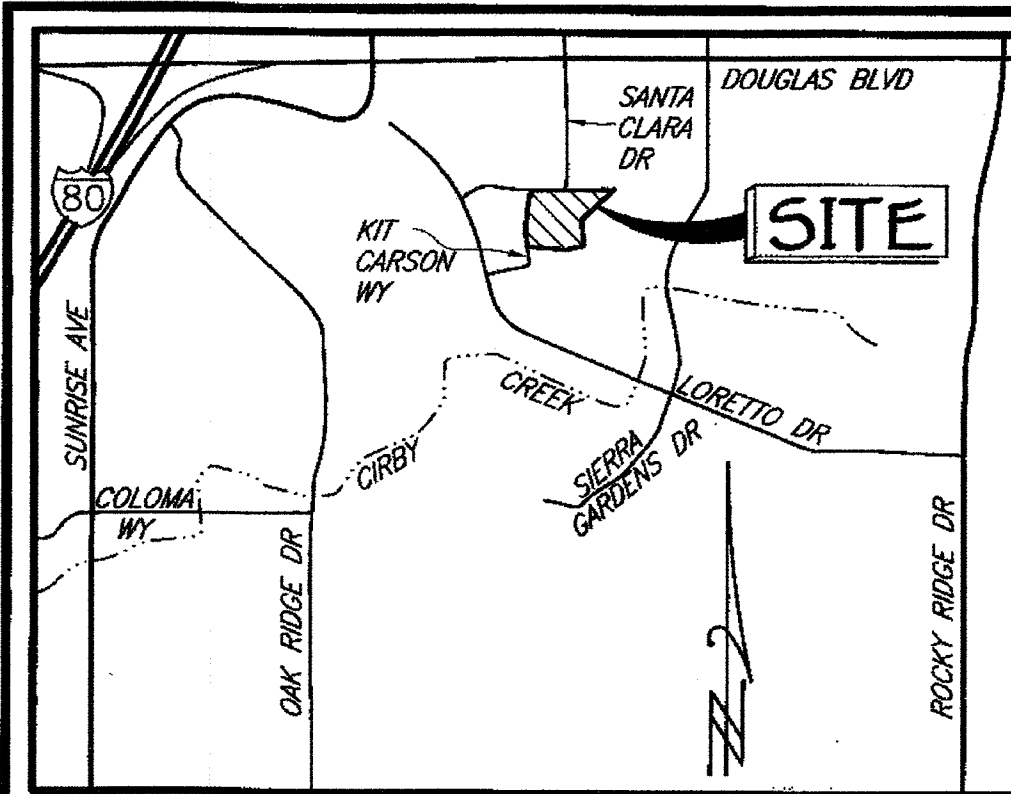


PROPOSED BOUNDARY MAP
**ANNEXATION MAP NO. 7 OF
 COMMUNITY FACILITIES DISTRICT NO. 4
 (PUBLIC SERVICES)**
 THE VILLAGES AT KIT CARSON
 CITY OF ROSEVILLE, COUNTY OF PLACER
 STATE OF CALIFORNIA

SCALE: 1" = 50'

SHEET 1 OF 1



VICINITY MAP

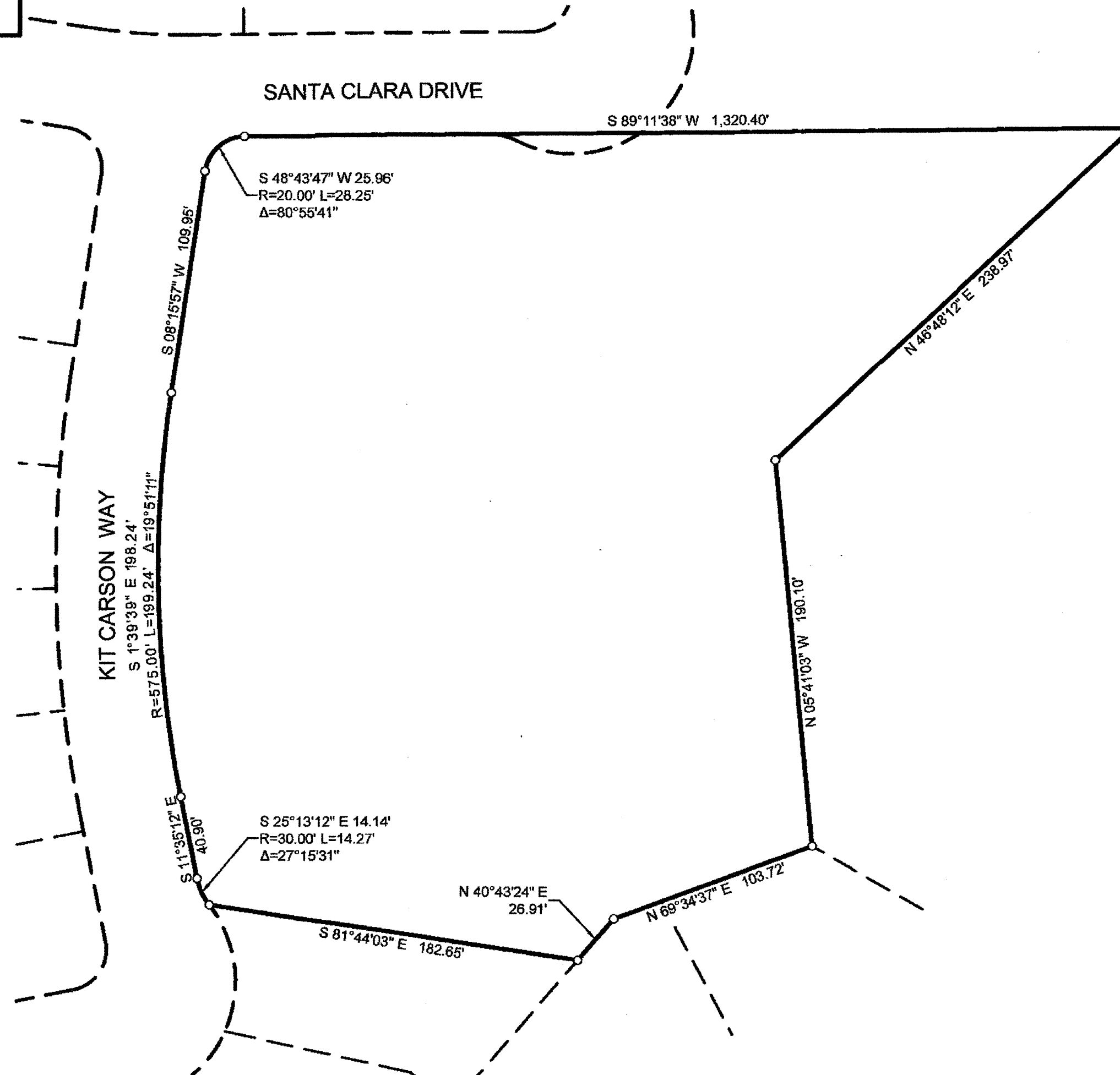
NO SCALE



SCALE: 1" = 50'

LEGEND:

- BOUNDARY OF ANNEXATION
- o DIMENSION POINT



REFERENCE IS HEREBY MADE TO THAT CERTAIN MAP FILED ON MAY 3, 2005 IN BOOK 3 OF MAPS OF ASSESSMENT AND COMMUNITY FACILITIES DISTRICT AT PAGE 50, IN THE OFFICE OF THE PLACER COUNTY RECORDER, STATE OF CALIFORNIA, WHICH THIS ANNEXATION AFFECTS.

I HEREBY CERTIFY THAT THE WITHIN MAP SHOWING PROPOSED BOUNDARIES OF ANNEXATION MAP NO. 7, TO COMMUNITY FACILITIES DISTRICT NO. 4 (PUBLIC SERVICES), CITY OF ROSEVILLE, COUNTY OF PLACER, STATE OF CALIFORNIA - THE VILLAGES AT KIT CARSON WAS APPROVED BY THE CITY COUNCIL OF THE CITY OF ROSEVILLE, AT A REGULAR MEETING THEREOF HELD ON THE 4TH DAY OF MARCH, 2020, BY ITS RESOLUTION NUMBER 20-050.

Sonia Orozco
 SONIA OROZCO, CITY CLERK
 CITY OF ROSEVILLE
 PLACER COUNTY, CALIFORNIA

FILED THIS 17 DAY OF March 2020, AT THE HOUR OF 11:07 O'CLOCK, a.m.,
 IN BOOK 3 OF MAPS OF ASSESSMENT AND COMMUNITY FACILITIES DISTRICT, AT
 PAGE 50-8, IN THE OFFICE OF THE RECORDER OF THE COUNTY OF PLACER, STATE
 OF CALIFORNIA.

DOC NO. 2020-0024821

RYAN RONCO
 PLACER COUNTY RECORDER

FEE: \$8.00

BY: *A. Melan*
 DEPUTY

FILED IN THE OFFICE OF THE CITY CLERK OF THE CITY OF ROSEVILLE, COUNTY OF PLACER,
 STATE OF CALIFORNIA THIS 5 DAY OF March 2020.

Sonia Orozco
 SONIA OROZCO, CITY CLERK
 CITY OF ROSEVILLE
 PLACER COUNTY, CALIFORNIA

MAP PREPARED BY:

IDW BAKER-WILLIAMS ENGINEERING GROUP
 Engineering / Surveying / Land Planning / Entitlement Processing / GPS Services
 6020 Rutland Drive, Suite 19 ~ Carmichael CA 95608
 (916) 331-4336 ~ fax (916) 331-4430 ~ office@bwengineers.com